

CATALINA AT THE POLO CLUB PLAT ONE

PARCEL D, THE POLO CLUB P.U.D.

BEING A REPLAT OF A PORTION OF TRACT II OF "THE POLO CLUB PLAT I"
SITUATE IN SECTION 35, TOWNSHIP 46 SOUTH, RANGE 42 EAST
PALM BEACH COUNTY, FLORIDA

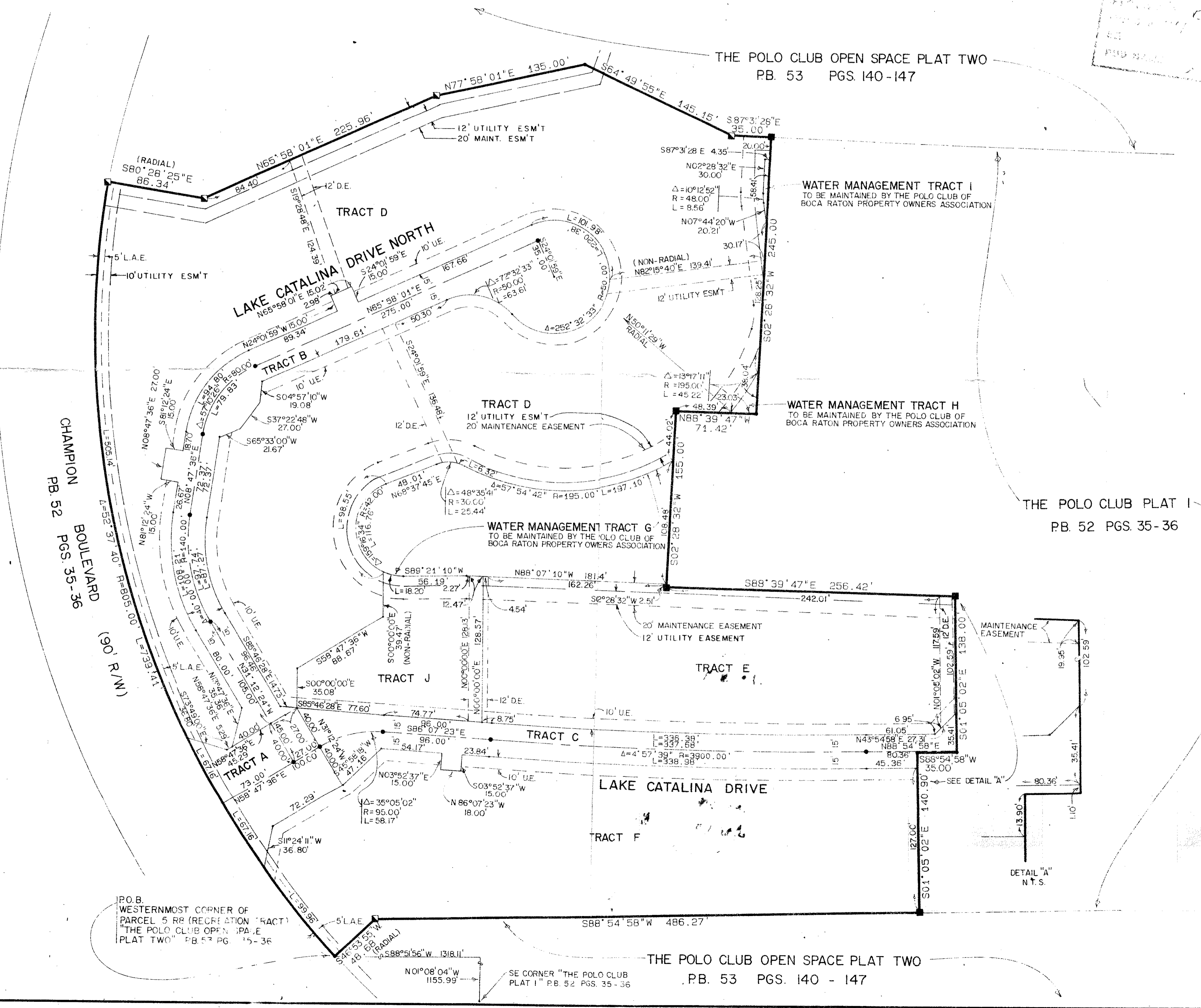
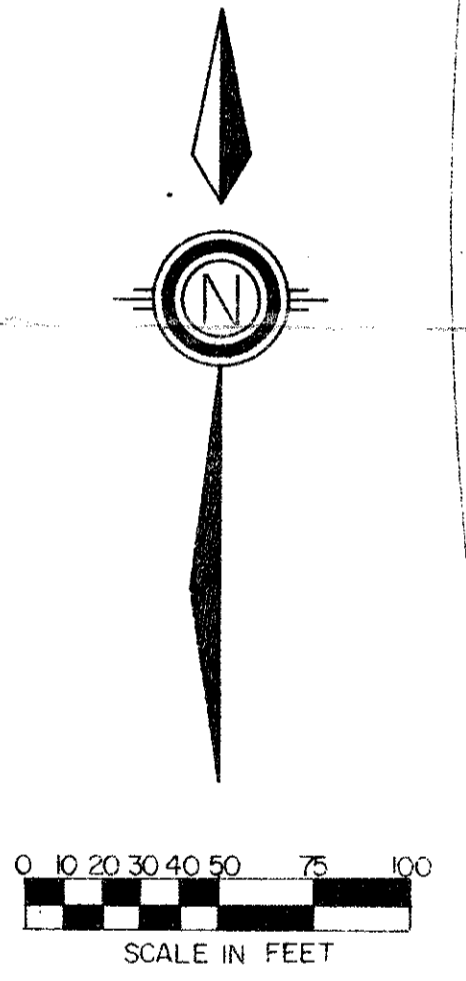
FEBRUARY, 1987

SHEET 2 OF 2

61

STATE OF FLORIDA
COUNTY OF PALM BEACH
THIS PLAT WAS FILED FOR
RECORD AT _____
THIS _____ DAY OF _____
AD, 1986 AND DULY RECORDED
IN PLAT BOOK _____ ON PAGES
_____ AND _____
JOHN B. DUNKLE, CLERK
BY: _____, D.C.

Handwritten notes:
SHEETS 1 & 2
BOOK 86-11
PAGE 147
FILED
PUB. NAME



0436-013

56/61

Meridian Surveying and mapping inc.		WEST PALM BEACH, FLORIDA	
DRAWN	JLB	DATE	10/20/86
CHECKED	MHC	SCALE	1" = 50'
DRAWING NO	86-PI-044	CATALINA AT THE POLO CLUB PLAT ONE PARCEL D THE POLO CLUB P.U.D.	

PLAN HOLD CORPORATION • IRVINE, CALIFORNIA
RECORDED BY NUMBER 0734R